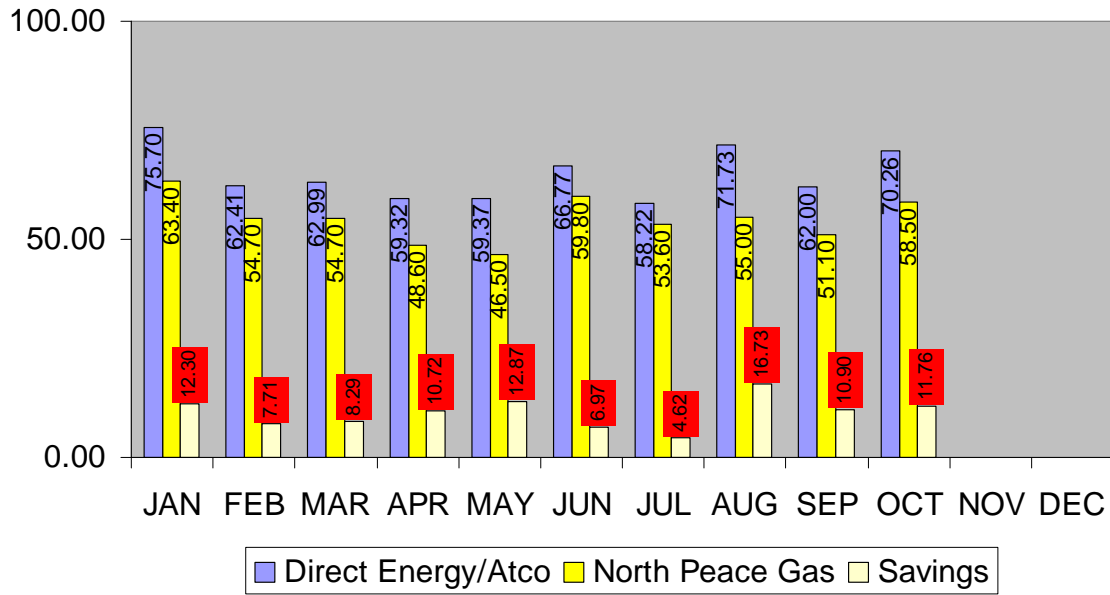


2012 Gas Comparison Based on 10GJ's of Gas



| 2012 | Atco/Direct Energy | North Peace Gas | |
|---------------------------------|--------------------|-----------------|-------------------------------|
| JANUARY | | | Cost/Savings to Member |
| COST OF GAS/GJ | 2.95 | 3.25 | |
| FIXED CHARGES | 33.76 | 19.50 | |
| DELIVERY CHARGE/GJ | 0.70 | 1.14 | |
| RATE RIDER | 0.51 | | |
| MUNICIPAL FRANCHISE FEE | 0.32 | | |
| TOTAL BILL USING 10 GJ'S | \$75.70 | \$63.40 | \$12.30 |
| FEBRUARY | | | |
| COST OF GAS/GJ | 2.15 | 2.38 | |
| FIXED CHARGES | 27.81 | 19.50 | |
| DELIVERY CHARGE/GJ | 0.70 | 1.14 | |
| RATE RIDER | 0.58 | | |
| MUNICIPAL FRANCHISE FEE | 0.33 | | |
| TOTAL BILL USING 10 GJ'S | \$62.41 | \$54.70 | \$7.71 |
| MARCH | | | |

| | | | |
|--------------------------|----------------|----------------|----------------|
| COST OF GAS/GJ | 2.09 | 2.38 | |
| FIXED CHARGES | 28.80 | 19.50 | |
| DELIVERY CHARGE/GJ | 0.70 | 1.14 | |
| RATE RIDER | 0.59 | | |
| MUNICIPAL FRANCHISE FEE | 0.35 | | |
| | | | |
| TOTAL BILL USING 10 GJ'S | \$62.99 | \$54.70 | \$8.29 |
| | | | |
| | APRIL | | |
| | | | |
| COST OF GAS/GJ | 1.59 | 1.77 | |
| FIXED CHARGES | 29.79 | 19.50 | |
| DELIVERY CHARGE/GJ | 0.70 | 1.14 | |
| RATE RIDER | 0.62 | | |
| MUNICIPAL FRANCHISE FEE | 0.39 | | |
| | | | |
| TOTAL BILL USING 10 GJ'S | \$59.32 | \$48.60 | \$10.72 |
| | | | |
| | MAY | | |
| | | | |
| COST OF GAS/GJ | 1.45 | 1.56 | |
| FIXED CHARGES | 31.77 | 19.50 | |
| DELIVERY CHARGE/GJ | 0.70 | 1.14 | |
| RATE RIDER | 0.56 | | |
| MUNICIPAL FRANCHISE FEE | 0.52 | | |
| | | | |
| TOTAL BILL USING 10 GJ'S | \$59.37 | \$46.50 | \$12.87 |
| | | | |
| | JUNE | | |
| | | | |
| COST OF GAS/GJ | 2.77 | 2.89 | |
| FIXED CHARGES | 30.78 | 19.50 | |
| DELIVERY CHARGE/GJ | 0.70 | 1.14 | |
| RATE RIDER | 0.02 | | |
| MUNICIPAL FRANCHISE FEE | 1.14 | | |
| | | | |
| TOTAL BILL USING 10 GJ'S | \$66.77 | \$59.80 | \$6.97 |
| | | | |
| | JULY | | |
| | | | |
| COST OF GAS/GJ | 2.10 | 2.27 | |
| FIXED CHARGES | 27.81 | 19.50 | |
| DELIVERY CHARGE/GJ | 0.70 | 1.14 | |
| RATE RIDER | 0.00 | | |

| | | | |
|--------------------------|------------------|----------------|----------------|
| MUNICIPAL FRANCHISE FEE | 2.44 | | |
| TOTAL BILL USING 10 GJ'S | \$58.22 | \$53.60 | \$4.62 |
| | | | |
| | | | |
| | AUGUST | | |
| | | | |
| COST OF GAS/GJ | 2.31 | 2.41 | |
| FIXED CHARGES | 32.77 | 19.50 | |
| DELIVERY CHARGE/GJ | 0.70 | 1.14 | |
| RATE RIDER | 0.72 | | |
| MUNICIPAL FRANCHISE FEE | 1.66 | | |
| TOTAL BILL USING 10 GJ'S | \$71.73 | \$55.00 | \$16.73 |
| | | | |
| | | | |
| | SEPTEMBER | | |
| | | | |
| COST OF GAS/GJ | 1.83 | 2.02 | |
| FIXED CHARGES | 28.80 | 19.50 | |
| DELIVERY CHARGE/GJ | 0.70 | 1.14 | |
| RATE RIDER | 0.72 | | |
| MUNICIPAL FRANCHISE FEE | 0.68 | | |
| TOTAL BILL USING 10 GJ'S | \$62.00 | \$51.10 | \$10.90 |
| | | | |
| | | | |
| | OCTOBER | | |
| | | | |
| COST OF GAS/GJ | 2.51 | 2.76 | |
| FIXED CHARGES | 28.80 | 19.50 | |
| DELIVERY CHARGE/GJ | 0.70 | 1.14 | |
| RATE RIDER | 0.72 | | |
| MUNICIPAL FRANCHISE FEE | 2.19 | | |
| TOTAL BILL USING 10 GJ'S | \$70.26 | \$58.50 | \$11.76 |
| | | | |